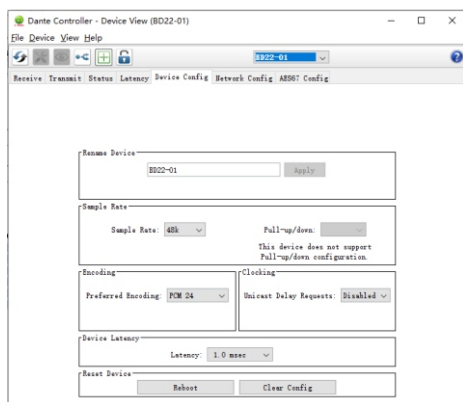
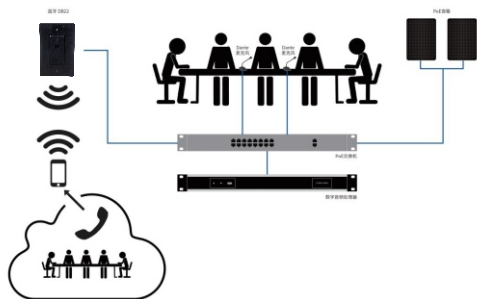


Steps:

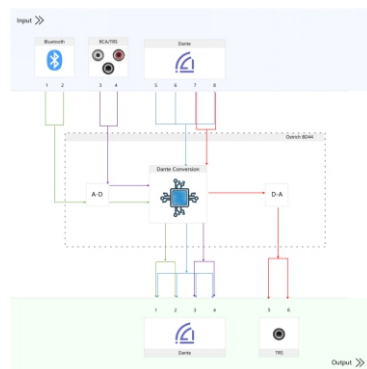
1. Click search, the online device will be displayed in the list box, click to select the device
2. Modify the Bluetooth name and click save
3. The Bluetooth name can be modified using Dante Controller software to modify the Dante chip name and the Bluetooth name can be modified simultaneously.



Networking Figure



Signal Flow Graph



User's Manual



Dante Bluetooth Wall panel

WDP-2B



Specifications are subject to be changed without notice.



Description

WDP 2B is a wall panel for converting between Bluetooth and Dante signal, achieving two way stereo transmission. It is widely used for teleconference, audio media transmission, etc.

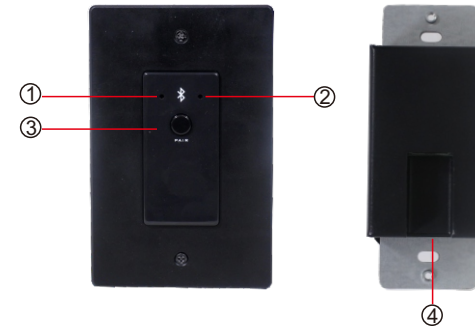
Features

- ▶ CAT5/6 connector to link with Dante network and controlled by Audinate;
- ▶ Small size integrated mounting bracket which can be installed in very limited space;
- ▶ Adopt advanced V5.0 Bluetooth technology;
- ▶ Simple to pair bluetooth by pressing a button;
- ▶ Compatible with a variety of mobile phones, tablets, computers and other devices;
- ▶ Support PoE power supply;
- ▶ Integrated power supply and audio transmission in one body
- ▶ Convert 1 Bluetooth Audio signal to 2 Dante Network Audio channels

Specification

| Model | WDP-2B |
|-----------------------|---|
| Dante Audio Channel | 2 |
| Bluetooth Interface | Bluetooth 5.0, stereo input and output |
| Dante Interface | RJ45 interface, stereo input and output |
| Sampling Rate | 48KHz, 24bit |
| Noise floor | -90dB |
| Power consumption | 2W |
| THD | Less than 0.005% |
| Freq. Response | 20~20KHz |
| Power Requirements | POE |
| Operating temperature | -10°C - 40°C |
| Working humidity | 5-95% |
| Dimensions | 123.5×79×35mm |
| Net weight | 156g |

Product Overview



- 1.Red indicator: Power/Bluetooth disconnected
- 2.Blue indicator: Bluetooth connection is successful
- 3.Bluetooth pairing button
- 6.RJ45 Network Interface

Operation

Power On:

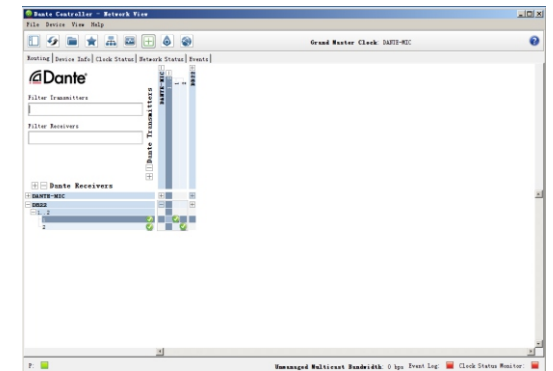
After starting WDP 2B, the red and blue LED indicator on the panel will flash alternately for a short time, after successfully power on, it will turn into red light flash. If the LED indicator light is not on or always on, the equipment will fail. It is recommended to power off and restart the equipment first.

Pairing and Connect:

When pairing, the user only needs to press and hold the PAIR button on the panel for about 3S. The LED red and blue indicators on the panel will start to flash alternately, indicating that the WDP 2B is now visible to other Bluetooth devices and accepts pairing. Then you can turn on other Bluetooth devices to search for devices and pair them. When only the blue LED indicator flashes on the panel, it means that the paired connection is successful. (Notes: When the WDP 2B maintains the last 10 paired devices, any previously paired devices on this list will be allowed to reconnect within the device range without re requesting pairing. The user only needs to select the corresponding Bluetooth name on the smart device)

Routing configuration:

After the above steps are completed, the user only needs to open the Dante Controller control software on the PC and configure the audio routing to complete the system setup.



Bluetooth Name Modification

Language setting: software language can choose English, simplified Chinese, traditional Chinese
Bluetooth name: Customer customized Bluetooth name

Search: Display the IP address, Dante name, Bluetooth name of online devices

Name synchronization: Bluetooth name is consistent with Dante name