



Prestel NS1-16C1-400P-2F1

18-Port Full Gigabit PoE Fiber Switch



USER MANUAL

Product Datasheet

18-Port Full Gigabit PoE Fiber Switch



OVERVIEW

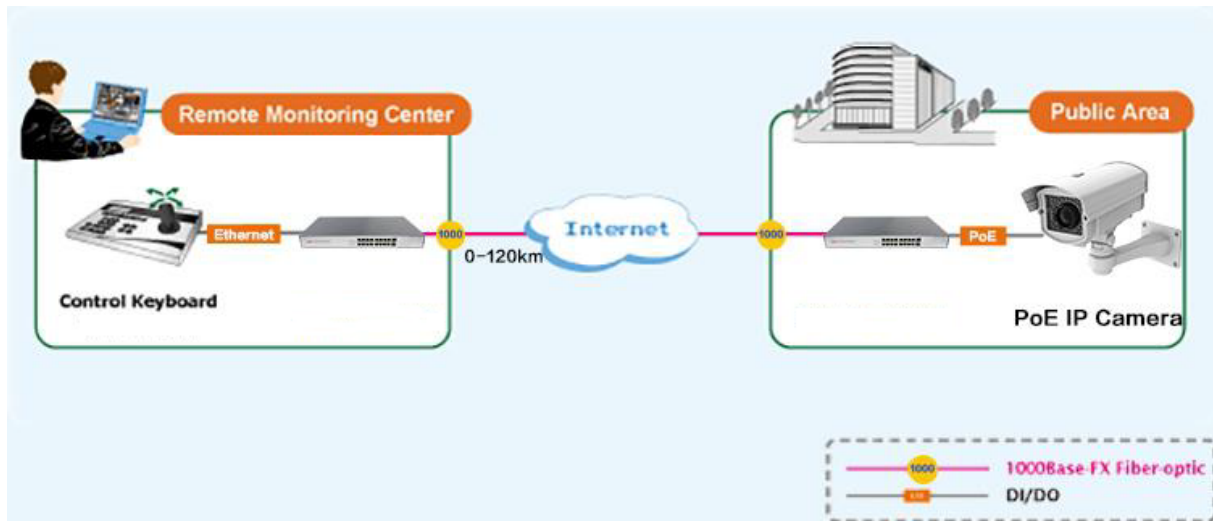
It has 16*10/100/1000M RJ45 ports and 2*1000M SFP slot ports. Port 1-16 can support IEEE 802.3af/at standard PoE power supply. single port PoE power reaches 30W, and the maximum PoE output power is 250W (at-400W). As a PoE power supply device, it can automatically detect and recognize the power receiving equipment that meets the standard and supply power through the network cable. It can supply power to POE terminal equipment such as wireless AP, webcam, VoIP, visual intelligent building intercom through network cable, and meet the network environment that needs high-density PoE power supply. It is suitable for hotel, campus, factory dormitory and small and medium-sized enterprises.

Unmanaged model, plug and play, no configuration, easy to use.

FEATURE

■ Full gigabit access, gigabit SFP port uplink

- ◇ All series support "gigabit Ethernet port and gigabit SFP fiber port " combination, which enables users to flexibly build networking to meet the needs of various scenarios.
- ◇ Support non-blocking wire-speed forwarding.
- ◇ Support full-duplex based on IEEE802.3x and half-duplex based on backpressure.



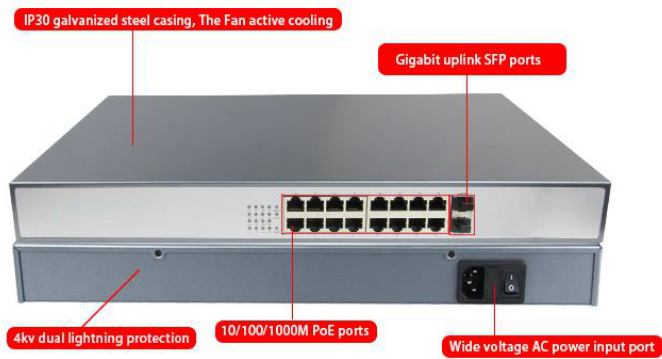
■ Intelligent PoE power supply

- ◇ 16*10/100/1000Base-T RJ45 ports, meeting the needs of security monitoring, teleconferencing system, wireless coverage, and other scenarios.
- ◇ IEEE 802.3af/at PoE standard, without damaging non-PoE devices.
- ◇ Priority system for PoE port, it will supply power to the high priority level port first when the power budget is insufficient and avoid overwork of the device.

■ Stable and reliable

- ◇ CCC,CE, FCC, RoHS.
- ◇ Plug and play, no configuration, simple and convenient.
- ◇ Low power consumption, galvanized steel casing, The Fan active cooling.
- ◇ Self-developed power supply, high redundancy design, providing a long term and stable PoE power output.
- ◇ The user-friendly panel, it can show the device status through the LED indicator of PWR,

Link ,PoE.



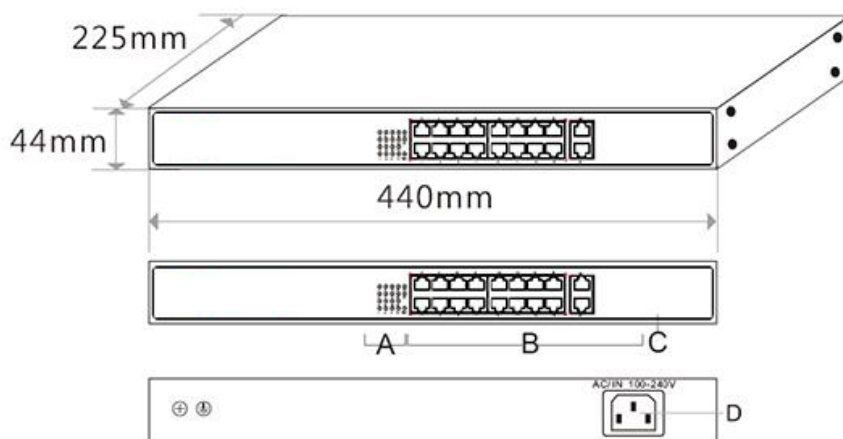
TECHNICAL SPECIFICATION

Interface Characteristics	
Fixed Port	16*10/100/1000Base-T PoE ports (Data /Power) 2*1000Base-X uplink SFP ports (Data)
Ethernet Port	10/100/1000Base-T(X),Auto-sensing,Full/half duplex MDI/MDI-X self-adaption
Twisted Pair Transmission	10BASE-T: Cat3,4,5 UTP(≤100 meter) 100BASE-TX: Cat5 or later UTP(≤100 meter) 1000BASE-T: Cat5e or later UTP(≤100 meter)
SFP Slot Port	Gigabit SFP optical fiber interface, default matching optical modules (optional order single-mode / multi-mode, single fiber / dual fiber optical module. LC)
Optical Cable	Multi mode: 850nm 0 ~ 550M,single mode: 1310nm 0 ~ 40KM, 1550nm 0 ~ 120KM.
Chip Parameter	
Network Protocol	IEEE802.3 10BASE-T; IEEE802.3i 10Base-T;

	IEEE802.3u 100Base-TX/FX; IEEE802.3ab 1000Base-TX IEEE802.3z 1000Base-X IEEE802.3x	
Forwarding Mode	Store and Forward(Full Wire Speed)	
Switching Capacity	52Gbps	
Forwarding Rate@64byte	26.78Mpps	
MAC	8K	
Buffer Memory	4M	
Jumbo Frame	9.2K	
LED Indicator	Power : PWR (green), network: link/Act (yellow), PoE: PoE (green), data : L/A (green)	
Reset Switch	Yes, One-button factory reset	
PoE & Power		
PoE Port	Port 1 to 16 IEEE802.3af/at @ POE	
Power Supply Pin	Defaul 1/2 (+), 3/6 (-)	
Max Power Per Port	30W; IEEE802.3af/at	
Total PWR / Input Voltage	250W (AC100-240V)	400W (AC100-240V)
Power Consumption	Standby<15W;Full load<240W	Standby<18W;Full load<400W
Power Supply	Built-in power supply, AC 100~240V 50-60Hz 4.1A	Built-in power supply, AC 100~240V 50-60Hz 5.0A
Physical Parameter		
Operation TEMP / Humidity	-20~+55°C;5%~90% RH Non condensing	
Storage TEMP / Humidity	-40~+75°C;5%~95% RH Non condensing	

Dimension (L*W*H)	440*225*44mm
Net /Gross Weight	<3.0kg / <3.8kg
Installation	Desktop, 19 inch 1U cabinet
Certification & Warranty	
Lightning protection / protection level	Lightning protection: 4KV 8/20us; Protection level: IP30
Certification	CCC;CE mark, commercial; CE/LVD EN60950;FCC Part 15 Class B; RoHS;
Warranty	3 years , lifelong maintenance.

DIMENSION



- A. Working indicator B. 16* PoE ports
C. 2* Gigabit Uplink RJ45 ports D. Power Input Port AC100-240V, 50/60Hz

APPLICATION

